

Drag & Burn

The disc burning process to install, load and burn is quite complicated. With Drag&Burn there is no need for CD installation and writing is as simple as using a FLASH drive or HDD.

Drag&Burn is loaded automatically by itself when a blank disc is inserted, two methods are supported: normal & casual secure.

There is a burning software, BlueBirds in spare space of flash memory. The PC recognizes spare space of flash memory as CD media.

So it seems to be inserted media in drive, even if empty drive. But it did not affect the operation of drive.

Normal Mode

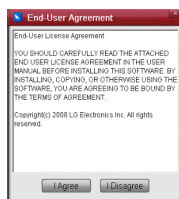
Merely Drag & Drop into the selection window.

Casual Secure Mode

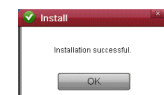
Protect Personal data through password protection on either a part of or the entire disc. Drives that do support this function will not be able to read or locate secure data.

Software Installation Guide

1. After installing the drive at the first time, the burning software so called "BlueBirds" will start installation automatically.



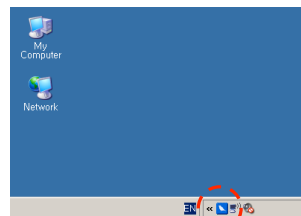
2. If you want to install, push the "I Agree" button and when software is installed.



If you don't want to install, push the "I Disagree" button, select the notification period and push the "OK" button. If you don't select the notification period, it will be selected "1 Weeks later" in default.



3. If software was usually installed, icon appears in tray at the lower right corner.



Notice

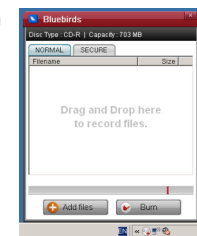
- Please uninstall any previous burning software you may have loaded on your PC in order to prevent possible compatibility issues.
- We recommend using the drive with the latest software as some problems encountered when using the drive can be solved by updating the software.
- After selecting the Cancel button, if you want to install manually, please execute "Install.exe" file in drive.
- In the VISTA 64bit, we recommend to reboot the computer.
- The Drag&Burn program does not support the use of right mouse button.

Software Usage Guide

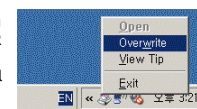
1. Insert a blank disc into drive and then the animation icon appears.



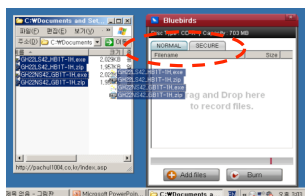
1-1. If you insert a blank disc such like CD-R, DVD±R, DVD±R DL into drive, the file selection windows appears automatically.



1-2. If you insert a blank disc such like CD-RW, DVD±RW, DVD±R W DL into drive, click the icon with the right mouse button at the lower right corner and select the "Overwrite". And then file selection windows appears automatically.



2. After selecting the Normal and Secure Tab, drag & drop files to be burn into file selection window. If you delete the selected files, push "DELETE" key on a keyboard.



3. If you push the "Burn" button, the burning starts. If the files were selected in the secure window, you must input the password.



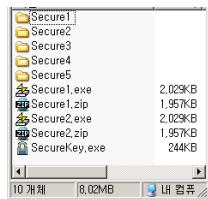
* While burning a disc, you can see the some information about drive.

How to read the secure data

1. If you double click the "SecureKey.exe" program, one of the files in the disc, the password input window appears.



2. After inputting the password, if you push the "OK" button, you can see secure data. If you double click the "SecureKey.exe" program in the secure mode, you can see the normal data.



* In the drive that doesn't support Casual Secure Burn function, it can not read the data recorded with this function..

Media Support

Functions		CD-R/RW	DVD+-R(W)	DVD+-R DL	DVD-RAM
Drag&Burn	Normal Burn	0	0	0	0
	Casual Secure Burn	0	0	0	0

Features

Functions		Features
Drag&Burn	Normal Mode	Burning Method : DAO (Disc At Once)
	Casual Secure Mode	Burning Method : DAO (Disc At Once)